

The Gabriel at Wexford

GH

GIBSON HOMES

The Gabriel ~ \$389,950

- 2801 Finished Sq. Ft.
- 2-Story Home
- 4 Bedrooms, 2 ½ Baths
- Full Unfinished Walk-Out Basement
- 2 Car Garage (depending on lot - may be a side load garage)
- 2 x 6 Framing
- 16 On Center Construction
- High Quality Materials



BUILDER INCENTIVE – FREE Finished Bonus Room with Full Price Offer!

All Gibson Homes offer the highest quality construction and attention to detail. This hands-on Custom Home Builder is so easy to work with and aims to please, so if you have something else in mind, just ask ~ **IT'S SO EASY!**

Prices subject to change depending upon lot.

Intelligent Buyers Appreciate The Value of Quality

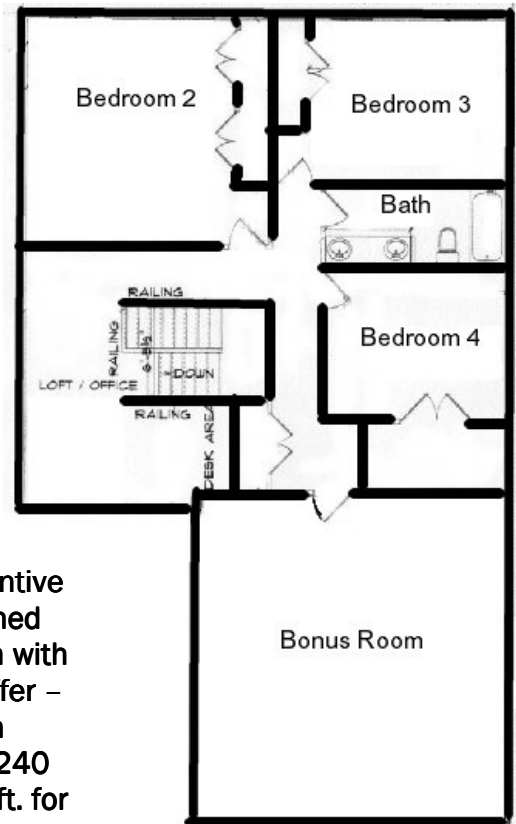
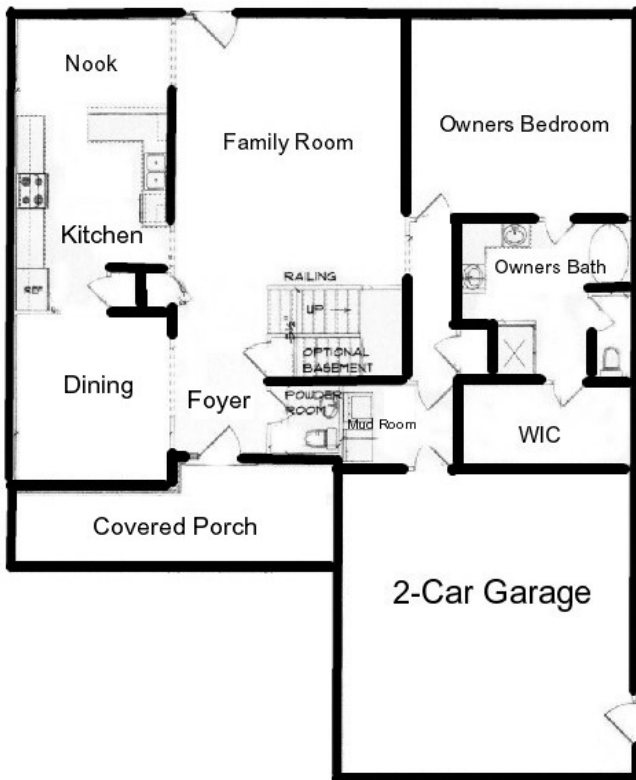
The Springfield at Wexford

GH

GIBSON HOMES

The Springfield ~ \$389,950

- 2560 Finished Sq. Ft.
- 1st Floor Master Bedroom
- 4 Bedrooms, 2 ½ Baths
- Full Unfinished Walk-Out Basement
- 2 Car Garage (depending on lot, may be a side-load garage)
- 2 x 6 Framing
- 16 On Center Construction
- High Quality Materials



**Builder Incentive
Free Finished
Bonus Room with
Full Price Offer –
Adds an
additional 240
finished sq. ft. for
a total of 2800
finished sq. ft.**

All Gibson Homes offer the highest quality construction and attention to detail. This hands-on Custom Home Builder is so easy to work with and aims to please, so if you have something else in mind, just ask ~ **IT'S SO EASY!**

Prices subject to change depending upon lot.

Intelligent Buyers Appreciate The Value of Quality

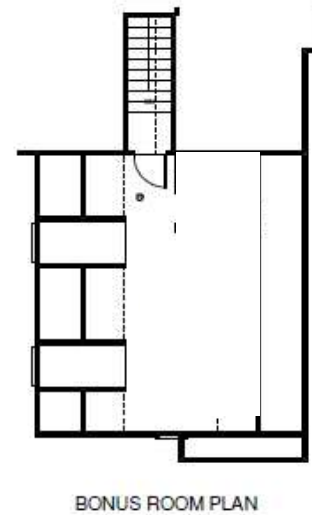
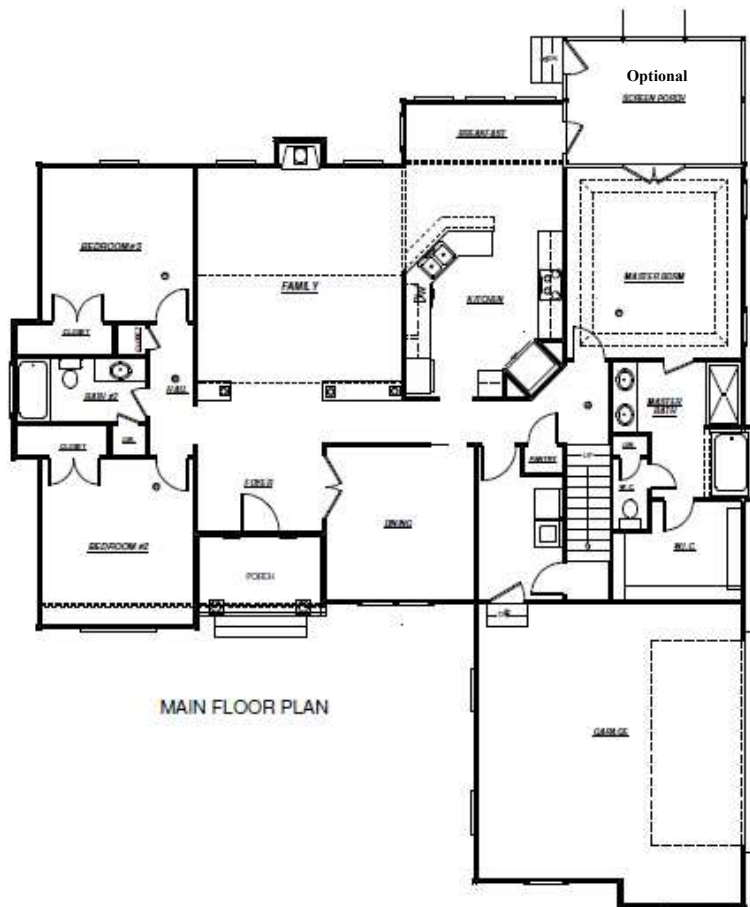
The Verona at Wexford

GH

GIBSON HOMES

The Verona ~ \$369,000

- 2400 Finished Sq. Ft.
- 1 ½ Story Home
- 3 Bedrooms
- 2 Baths
- 2 Car Garage
- 2 x 6 Framing
- 16 On Center Construction
- High Quality Materials



All Gibson Homes offer the highest quality construction and attention to detail. This hands-on Custom Home Builder is so easy to work with and aims to please, so if you have something else in mind, just ask ~ **IT'S SO EASY!**

Prices subject to change depending upon lot.

Intelligent Buyers Appreciate The Value of Quality

GENERAL SPECIFICATIONS – WEXFORD SUBDIVISION

Interior

- 9' first floor, 8' second floor
- Mirrors above vanities
- Ventilated shelving
- Doors from builder selection
- Shoe molding around base on wood flooring
- Trim – crown & chair molding in Dining Room

Plumbing

- Delta fixtures from builder selection
- Stainless steel double bowl sink in kitchen
- Soaking tub in master bath from builder's selection
- 5' tub/shower combo in hall bath from builder's selection
- Electric 50-gallon water heater
- 2 exterior hose bibs

If Basement

- Full bath rough-in
- Windows & doors from builder selection

Stainless Steel Appliances (Sears)

- Kenmore refrigerator
- Kenmore electric self-cleaning range
- Kenmore microwave oven
- Kenmore dishwasher
- Disposal

Fireplace

- Prefab gas fireplace with slate surround & hearth

Flooring

- Hardwood – throughout first floor (except in 1st floor bedrooms)
- Carpet – throughout second floor and any first floor bedrooms
- Ceramic tile – laundry, all bathrooms except powder room on 1st floor

HVAC

- Sized according to plans
- 2-Story homes - 2-zone
- 1 to 1 ½ story homes – 1-zone

Electrical

- Cable in all bedrooms, family room
- Telephone in all bedrooms, kitchen or family room
- Ceiling fans in family room and master bedroom
- Ceiling fan rough in wiring in all secondary bedrooms
- Smoke detectors in all bedrooms and each level

Cabinets

- Custom maple cabinetry from builder selection
- Granite tops from builder selection
- Cultured marble top vanities in bathrooms

Exterior

- Asphalt driveway
- 30 year shingles
- Landscaping from builder (seed & straw disturbed areas)
- Vinyl single hung windows
- Vinyl siding
- Seamless gutters & downspouts
- Fiberglass front door w/ transom
- 2x6 exterior walls
- All other doors - metal
- Brushed concrete walks & stoops
- Deck – 12x12 – if grade allows

Marketed By

RE/MAX Affinity Group

Julie Kuhl ~ 434.882.0227

JulieKuhl@remax.net

and

Linda Willer – 434.985.4094

LindaWiller@remax.net

Although information is believed to be correct, it is not guaranteed

Builder reserves the right to change above items with such that are considered equal